



CENTRE FOR
ADVANCED CANCERS
& IMMUNOTHERAPY



Fighting cancer the right way.



**ADVANCED
CANCER CARE
PROGRAM**

**MANAGING LATE-STAGE
CANCER TREATMENT BETTER
WITH OUR COMPREHENSIVE
ADVANCED CANCER
CARE SERVICES**



DEALING WITH ADVANCED CANCER

Advanced cancer, which is cancer detected at a late stage, usually can't be cured, but it can often be managed. Patients suffering from advanced cancer have different goals for their care; some may want to try aggressive treatment options, while some may want to undergo clinical trials.



Some may choose not to go through cancer treatment, but may be open to palliative options, through which the symptoms of the disease can be managed. Decisions for advanced cancer care options are based on personal preferences.

Regardless of what the patient decides, the goal is to provide the best quality of life possible, as long as they live.

ADVANCED CANCER CARE AT CYTECARE

Cytecare's Advanced Cancer Care involves a therapeutic strategy that brings together varied disciplines to achieve an orchestrated symphony of treatments, to ensure better cancer management, improve quality of life and help increase life expectancy.

We believe in enriching the treatment with measures that strengthen the physical and psychological healing systems & integrating these with adjuvant therapeutic methods, that lead to better outcomes.

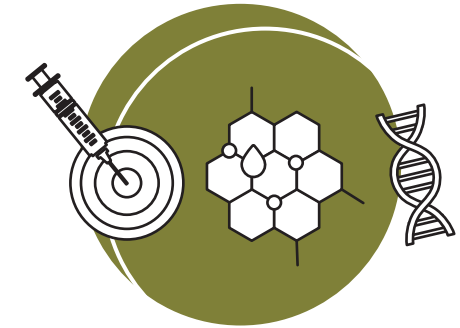


THE TREATMENT AND CARE WE PROVIDE

Cytecare provides highly specialised treatments and modern diagnostic services for cancer. We follow research-based cancer care methodologies and evidence-based therapies. This level of integrated care is delivered by our multi-disciplinary team of clinicians, who are strongly guided by national as well as global protocols. We also understand that every cancer is different, and so are the patients affected by it. Hence, we aim to provide treatment options that are tailor made to suit individual needs.

01 MEDICAL ONCOLOGY

The Medical Oncology team at Cytecare has expertise and training in diagnosing cancer and delivering chemotherapy, immunotherapy, targeted therapy and/or hormone therapy. Our medical oncologists play a pivotal role in the tumour board approach that Cytecare follows for all our advanced cancer care patients.



Multidisciplinary tumour board approach is known to result in most effective outcomes worldwide and is a norm at Cytecare. Our medical oncologists work in tandem with the diagnostics, surgical, interventional and radiation specialists to suggest treatment protocols and approaches that have better outcomes and focus on overall well-being of the advanced cancer care patients.

The team also collaborates with the pain and palliation, psycho oncology and nutrition experts to help reduce the adverse effects of the therapy.

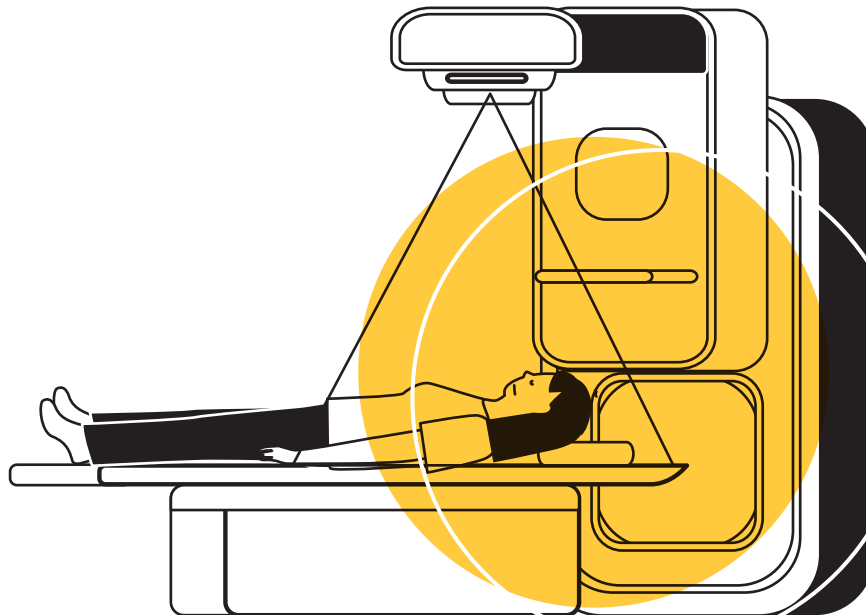


02 RADIATION ONCOLOGY

Radiation Oncology plays a significant role in alleviating the symptoms, which are a result of advanced metastatic malignant conditions. Radiation, along with pain and palliative care, is the backbone for pain relief in metastatic bone lesions.

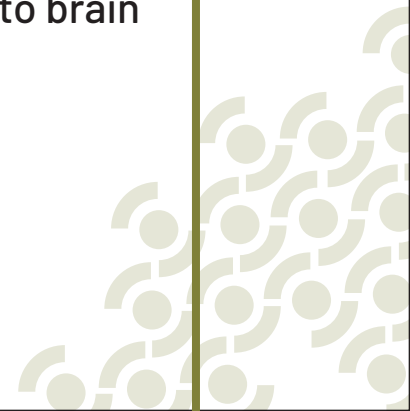
Radiation helps in relieving pressure symptoms when bone metastasis is accompanied by a soft tissue component, which may compromise critical neural structures.

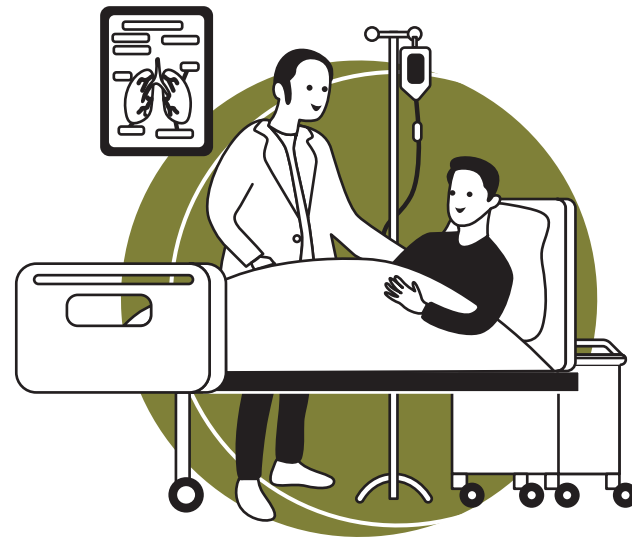
Radiation is also used for controlling bleeding from advanced malignant foci, specifically termed as Hemostatic RT.



Radiation also forms a major part of palliative care in metastatic deposits involving the Brain Parenchyma.

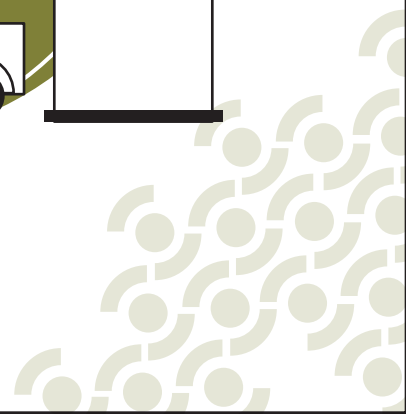
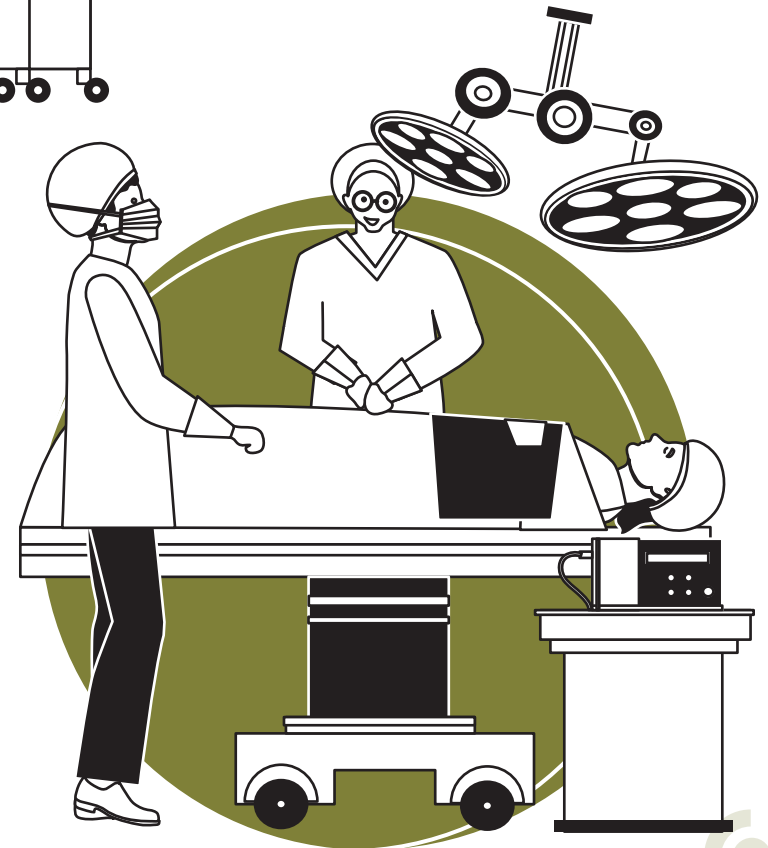
Radiation helps relieve intracranial pressures, reduce seizure episodes and alleviate headaches caused due to brain metastasis.





03 SURGICAL ONCOLOGY

Advanced cancers, very often, are not curable but they can only be managed. Palliative surgical intervention plays an important role in advanced cancers through minimally invasive palliative surgical procedures, **which helps in relieving the symptoms and improving the quality of life of patients suffering from terminal cancers.**



04 PAIN AND PALLIATION

The Pain and Palliative Care specialists are an integral part of our multi-disciplinary team. Our palliative specialists work along with the treating physician throughout your care to support, prevent and ease the suffering from the effects of cancer and its treatment.

This improves your quality of life, thus helping you to tolerate and comply with treatment positively and have quality time with your family.



05 SPECIALITY CLINICS



LYMPHEDEMA CLINIC

At Cytecare, patients suffering from lymphedema are treated by performing various techniques including manual lymphatic drainage and compression bandaging. They are suggested arm exercises and also advised to maintain healthy body weight.



WOUND CARE

At Cytecare, patients are encouraged to discuss their concerns with the doctors and nurses, who decide the most acceptable and comfortable way to dress your wound, help you relax and provide counselling, when necessary, to reduce anxiety.



OSTOMY CLINIC

Ostomy involves creating an artificial opening created through surgery from an area inside the body to the outside, when organs like intestine, colon or rectum are affected. Doctors at Cytecare help patients understand the condition and cope with it.



MUCOSITIS CLINIC

Mucositis can be a serious side effect of some cancer treatments. Doctors at Cytecare prescribe medicines for pain due to mucositis and suggest proper mouth care regime, dietary changes and cold therapy for prevention.



CONSTIPATION CLINIC

Constipation is yet another side effect of cancer treatments. Doctors at Cytecare prescribe medicines to soften stools and stimulants that help intestines in pushing them out. Patients are also advised various home remedies such as having a fibre-rich diet, exercising and drinking plenty of fluids.



FEELING DISTRESSED WHEN YOU OR YOUR LOVED ONE IS DIAGNOSED WITH CANCER IS OFTEN A PART OF THE JOURNEY. AT TIMES, THESE FEELINGS OF DISTRESS CONTINUE TO LINGER OR INCREASE AND OFTEN INTERFERE WITH THE TREATMENT AND THE OVERALL QUALITY OF LIFE.

06 PSYCHO-ONCOLOGY

Psycho Oncology plays an important role in understanding the psycho-social and psycho-biological aspects of cancer, thereby reducing psychological distress and improving the quality of life, which leads to better functional and emotional well-being.

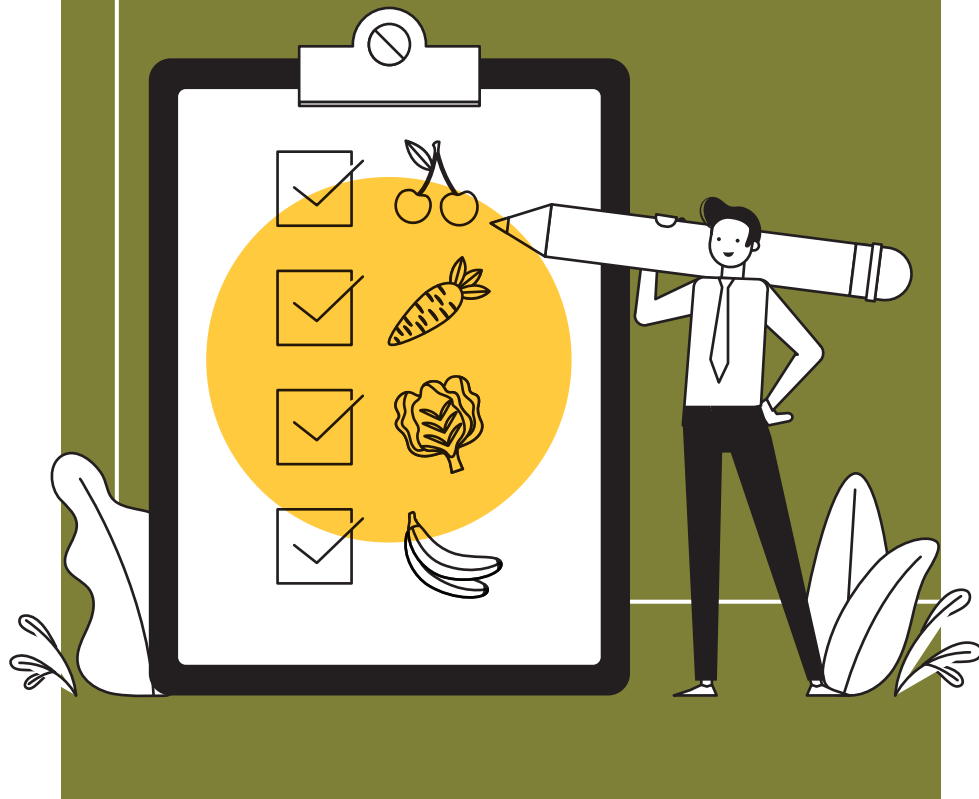
The Psycho Oncology Services (POS) at Cytecare offers professional psychological support in the form of psychological counselling, psychotherapy and psycho-education to patients and their loved ones on the emotional challenges that may arise at the different stages of their cancer journey.

07 PHYSICAL REHABILITATION

Cancer treatment can leave the patient with decreased strength and physical activity.

OUR PHYSICAL REHABILITATION SPECIALISTS ENSURE OUR PATIENTS REGAIN THEIR STRENGTH AND ARE ABLE TO PERFORM THEIR DAY-TO-DAY ACTIVITIES INDEPENDENTLY.





Nutrition is an important part of cancer treatment.

08 ONCO-NUTRITION

Our Onco-nutritionists focus on re-introducing the concept of balanced eating that includes antioxidants, phytonutrients and vitamins.

The Onco-nutritionists help to make informed choices about nutrition, answer your nutrition-related questions and provide a wide variety of dietary choices which include semi solid and liquid foods. This helps patients maintain good health and avoid weight loss especially while undergoing Radiation Therapy.

Our Onco-nutritionists have published a Diet Book keeping in mind the requirements for cancer patients, the soft copy of which is available on request.

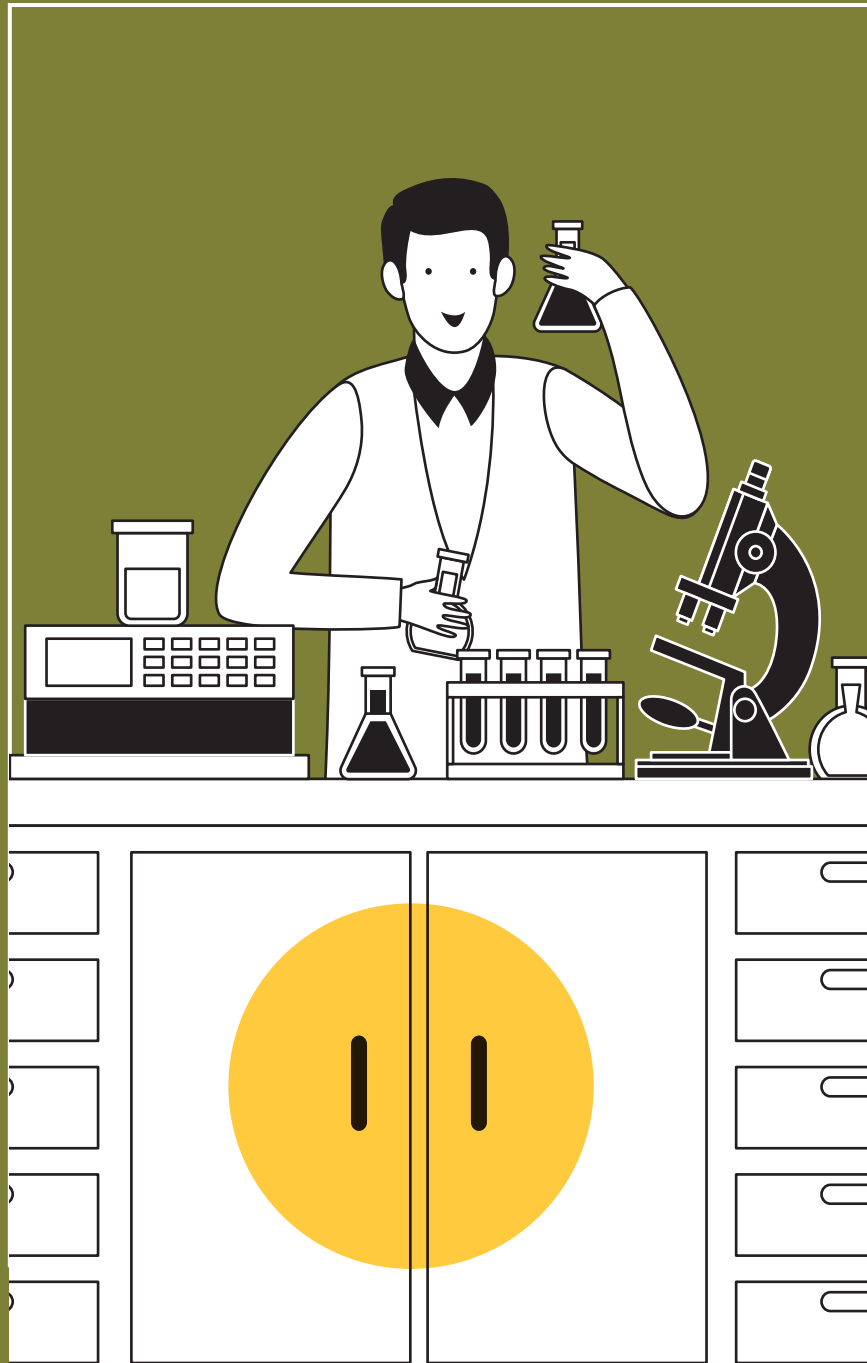
09 MIND-BODY THERAPY

The mind-body therapy at Cytocare is designed to support you and your caregivers before, during and after cancer treatment.

The mind-body therapy, an integral part of holistic care, recognises the powerful ways in which emotional, social and behavioral factors may directly affect a patient's physical health.



WE OFFER THERAPEUTIC PRACTICES AND RELAXATION TECHNIQUES IN AN EFFORT TO HELP YOU AND YOUR CAREGIVERS RESPOND TO A CANCER TREATMENT REGIMEN, SO YOU ARE BETTER ABLE TO IMPROVE YOUR HEALTH, RELATIONSHIPS AND OVERALL WELL-BEING.



10 CLINICAL RESEARCH

Clinical research studies are conducted to test and develop new drugs and to refine treatment strategies. Such studies open up new windows of opportunity for advanced cancer patients and give them more options to consider.

While clinical trials are conducted in patients of early stage diseases as well, they can be particularly important in cancers of the advanced stages.



11 HOME CARE SUPPORT

Home care services at Cytecure helps you address the intensive cancer treatment requirements with comprehensive treatment solutions ranging from chemotherapy to palliative care which helps in faster recovery with lower risk of infection.



Home care services offered by partners at Cytecure:

- 24x7 clinical supervision and e-reports for doctors
- Highly-trained nurses and clinical staff
- Specialist care plan & tele-consultation
- Primary nursing and attendant care
- Physiotherapy at home
- Blood sample collection at home
- Adjuvant therapy administration
- Chemo port flush
- Electrolyte infusion/Antibiotic infusion
- Palliative and end of life care (if suggested by the treating doctor)
- PICC line dressing



12 PATIENT NAVIGATORS

Cytecure's dedicated patient navigators provide patients, their families and caregivers with highly personal services and a strong support network throughout their journey. They play a vital role in engaging the community of current and past cancer patients, their caregivers and families through a variety of initiatives.

Patient navigators support cancer patients to take timely decisions that aid better outcomes, educate them and help in breaking health system barriers. With their own personal experiences to share, they form the bridge between the treatment and the patient.

OUR MULTIDISCIPLINARY TEAM OF EXPERTS

CLINICAL EXPERTS



DR HARI MENON

Senior Consultant & Director -
Haemato Oncology
Director - Bone Marrow
Transplant Programme



DR PRASAD NARAYANAN

Senior Consultant & Director - Medical
Oncology (Solid Tumours)



DR SWATI BHAT

Consultant - Pain & Palliative Care
Interventional Spine Specialist



DR HARISH P

Consultant - Medical Oncology



DR VASUDHA N R

Associate Consultant - Paediatric
Oncology



MS. MICHELLE NORMEN

Lead - Psycho Oncology Services

ADVANCED CANCER AND CAREGIVERS

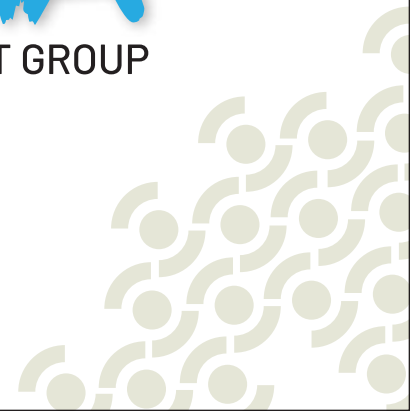
Caregivers go through cancer along with the patient. If you're a caregiver, you may be tired and worried as you cope with your loved one's cancer.

Caring for someone with advanced cancer brings new challenges and concerns. Things can get harder as your loved one's cancer progresses. It's important to take care of yourself and reach out for help.

Samrakshan and DISHA – the support groups for Caregivers of Cancer Patients – help to cope with the emotional aspects of cancer.



OUR CAREGIVER SUPPORT GROUP



PATIENT STORY



GARGI MUKHERJEE

When my mother was diagnosed with cancer in Nov 2016, she was already at late-stage. I had to start her treatment immediately. After 2 cycles of chemo, when the situation was a bit under control and I started my research of finding the right doctor, better hospital for her further treatment, I was introduced to Cytocare by a friend in Dec 2016.

From my very first interaction with their Senior Consultant, Medical Oncologist Dr. Prasad Narayan and their Hospital Administration Head Ms. Rekha Shivakumar, I was confident that there are hospitals and doctors in India that think of patients' care first and help patients' families to take informed decisions.

At Cytocare, I felt the approach towards treating patients is holistic and comprehensive. They not only maintain higher treatment standards and follow protocols, but also maintain a very high level of integrity.

And at times, I have felt they have gone beyond expectation - thank you so much! I am grateful for the way they have been taking care of my mother for the last 2 years.





HARISH KUMAR

My mother was admitted to Cytecare as a last resort after a delay of 18 months from the date of detection. We tried alternative medicines in the interim, which only aggravated the growth of cancer. We realised our mistake the day we met Dr. Prasad and right away got her admitted. By God's grace, she is responding well and halfway through the treatment. Now she is undergoing the next cycle of treatment and hope she responds well.

To our surprise, the entire hospital was highly professional in their approach. Very courteous, kind and understanding to the needs of patients and their caretakers too. They know their job very well. Would like to thank Dr. Prasad, Dr. Harish, Dr. Ajay Rao, Dr. Vijetha, Pyscho onco team and other support staff from reception, nurses, housekeeping, who always had a smile on their faces and kind words to say.



PATIENT STORY





Fighting cancer the right way.

Cytecure Hospitals Pvt. Ltd.

Venkatala, Near Bagalur Cross,
Yelahanka, Bengaluru - 560 064, India.

Toll free number: +91 80 2217 6767

- enquiry@cytecure.com
- www.cytecure.com

For more details & to know more about our ACCP card, please contact your patient coordinator or the Front Desk.